



Pharmacy Department

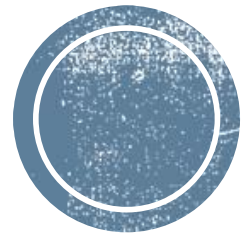


Lakeland Regional **Health**[®]

Pharmacy Family

- ❑ 190 Pharmacy Employees
- ❑ 30 Decentralized Pharmacists
- ❑ Clinical Specialist Areas
 - Ambulatory Care
 - Critical Care
 - Emergency Medicine
 - Hematology/Oncology
 - Infectious Diseases
 - Informatics
 - Pain Management
 - Pediatrics
 - Psychiatry
 - Transitions of Care
 - Trauma





Pharmacy Leadership



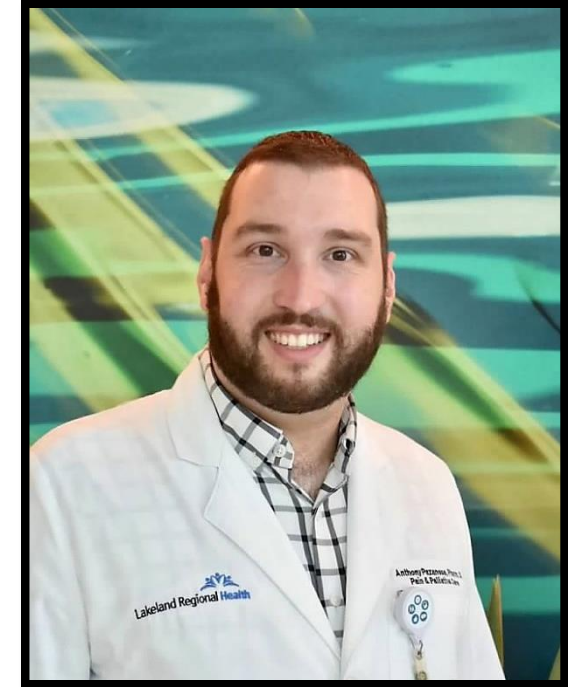
Lakeland Regional **Health**[®]



Rod Dangerfield
Director of Pharmacy



Brian Anger
Assistant Director of Pharmacy



Anthony Pazanese
Pharmacy Clinical Manager





Residency Leadership



Lakeland Regional **Health**[®]

PGY2 Residency Directors



Kyle Dillon
Critical Care



Kayla Wilson
Emergency Medicine



June Vasquez
Pain Management



PGY1 Residency Directors



Jessica Cobian
Acute Care

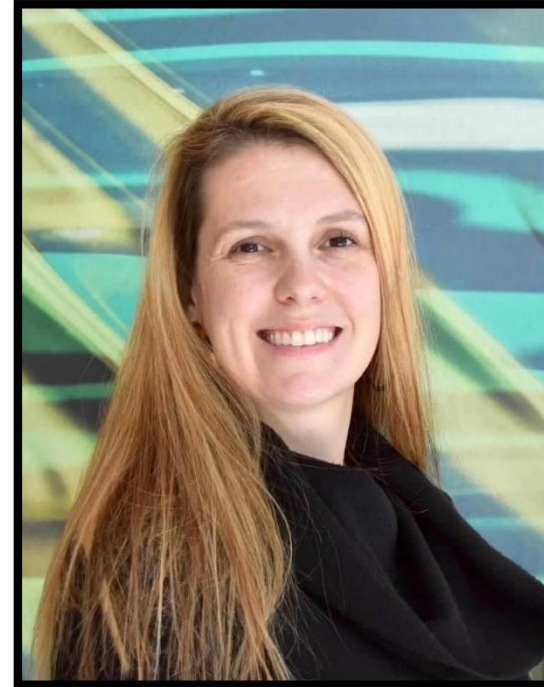


Macie Kent
Ambulatory Care





Claudia Garcia Lorenzo
Residency Coordinator



Jennifer Montero
**Professional Development
Coordinator**





Residency Advisory Council



Lakeland Regional **Health**[®]

Ambulatory Care

Macie Kent



- Alma Mater: Palm Beach Atlantic University
- PGY1 Primary Care Residency at Florida Hospital, Celebration, FL
- At LRH since 2010
- Macie is a Key West native



Critical Care

Kyle Dillon



- Alma Mater: Southern Illinois University Edwardsville
- PGY1 Pharmacy Residency at HSHS St. Johns Hospital, Springfield, IL & PGY2 Critical Care Residency at LRH
- At LRH since 2017
- If a movie was made about Kyle's life, Steve Carell would play Kyle

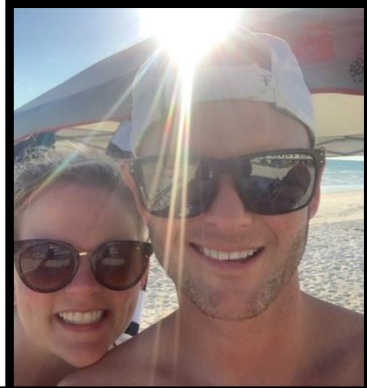


Critical Care

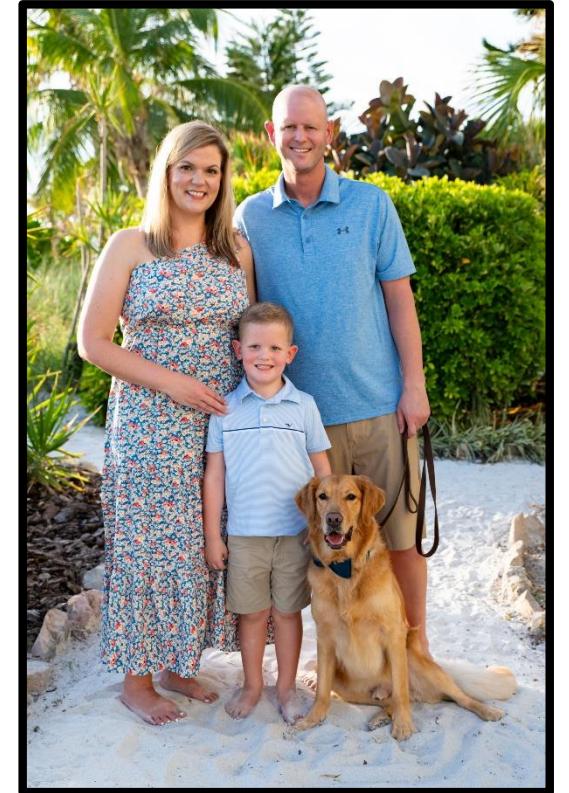
Rebecca Rich



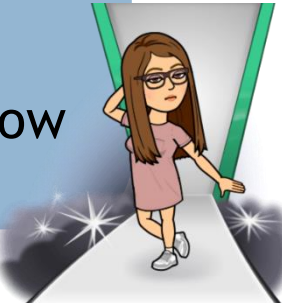
TWIN Sister



Son Chase, Niece Colbie & Nephew Cade



- Alma Mater: University of Florida
- PGY1 Pharmacy & PGY2 Critical Care Residencies at Orlando Regional Medical Center, Orlando, FL
- At LRH since 2013
- Rebecca was introduced to her husband by a fellow LRH preceptor



Critical Care

Mike Semanco



FAMILY
TIME

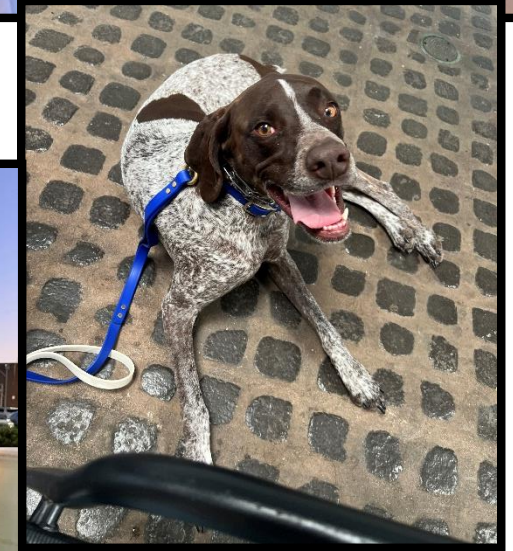


- Alma Mater: Duquesne University
- PGY1 Pharmacy Residency at Mercy Hospital, Pittsburgh, PA & PGY2 Critical Care Residency at York Hospital, York, PA
- At LRH since 2006
- Mike's go-to karaoke song is Respect by Aretha Franklin



Emergency Medicine

Natalia Figueroa

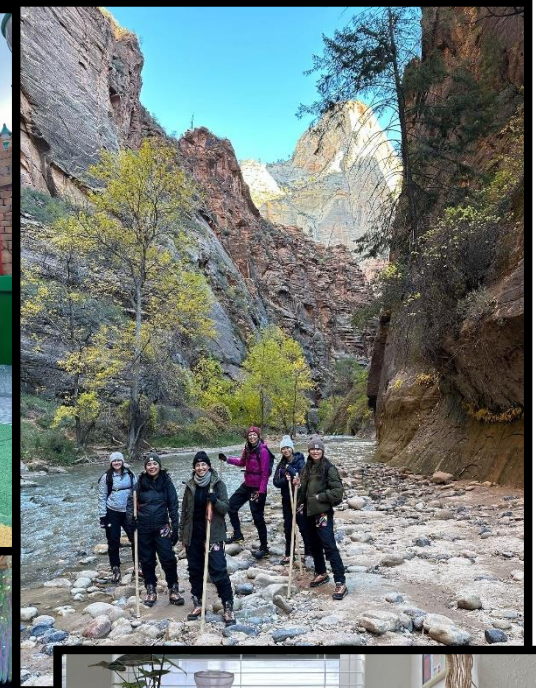


- Alma Mater: University of Florida
- PGY1 Pharmacy Residency at South Miami Hospital, Miami, FL & PGY2 Emergency Medicine Residency at LRH
- At LRH since 2023
- Natalia enjoys reading, traveling, and being outdoors



Emergency Medicine

Megan Nguyen



- Alma Mater: University of Florida
- PGY1 Pharmacy Residency at Sarasota Memorial, Sarasota, FL & PGY2 Emergency Medicine Residency at Jackson Memorial, Miami, FL
- At LRH since 2023
- Megan is a coffee lover/foodie and enjoys trying new cafes/restaurants



Emergency Medicine

Heather Schucker



- Alma Mater: Philadelphia College of Pharmacy
- PGY1 Pharmacy Residency at Einstein Medical Center, Philadelphia, PA & PGY2 Emergency Medicine Residency at Tampa General Hospital, Tampa, FL
- At LRH since 2023
- Heather loves her fur child Hazel, being a plant mom and relaxing at the beach



Emergency Medicine

Kayla Wilson

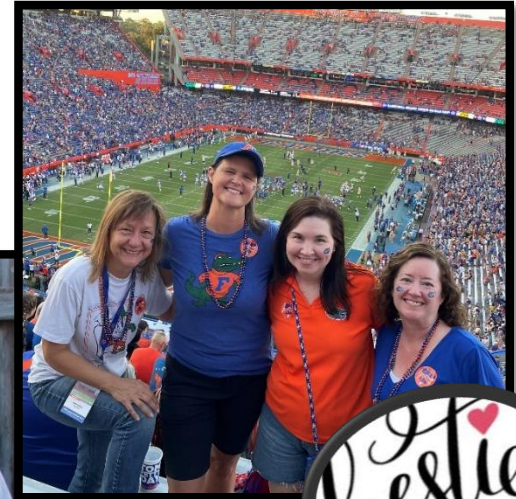


- Alma Mater: University of Florida
- PGY1 Pharmacy & PGY2 Emergency Medicine Residencies at LRH
- At LRH since 2013
- Kayla formally competed in both springboard and platform diving!



Hematology/Oncology

Angela Pearson



- Alma Mater: University of Florida
- PGY1 Pharmacy Residency at Regional Medical Center at University of Tennessee, Memphis, TN
- At LRH since 1995
- Angela is a Lakeland native



Infectious Diseases

Jessica Cobian



- Alma Mater: University of Florida
- PGY1 Pharmacy & PGY2 ID Residencies at Jackson Memorial Hospital, Miami, FL
- At LRH since 2012
- If Jessica had a warning label it would read “CAUTION: long winded, hang tight this may take a while”



Informatics

Doug Geer

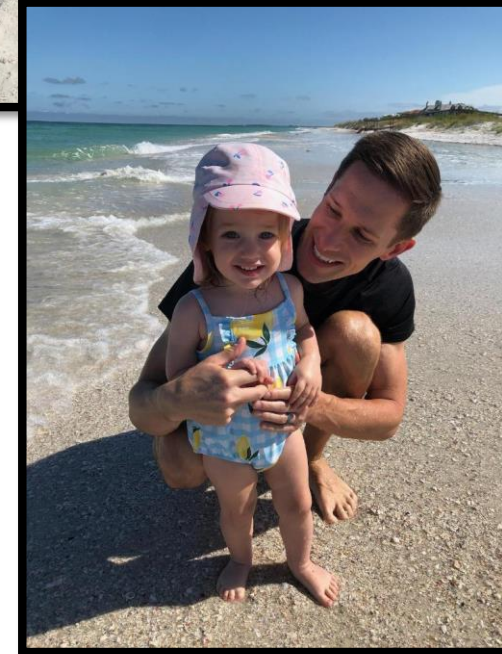
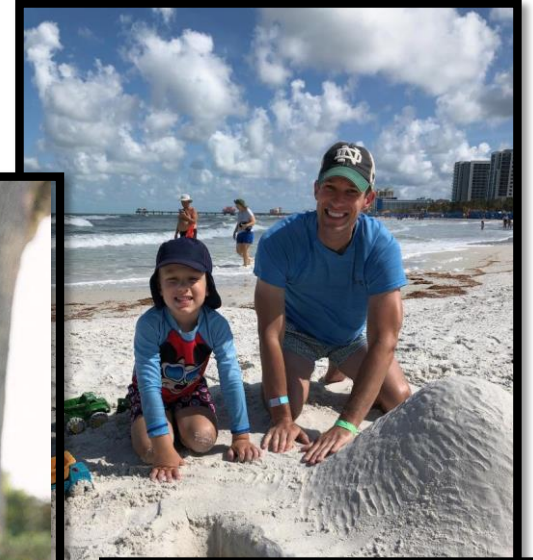


- Alma Mater: University of Wisconsin
- PGY1 Pharmacy Residency at Shands Hospital, Jacksonville, FL
- At LRH since 1995
- Growing up, Doug wanted to be a meteorologist



Internal Medicine

Phillip Buchanan



- Alma Mater: Butler University
- PGY1 Pharmacy Residency at Lutheran Health Network, Fort Wayne, IN
- At LRH since 2019
- Phillip played wide receiver and punted on the football team at Butler



Internal Medicine

Claudia Garcia Lorenzo



- Alma Mater: University of South Florida
- PGY1 Pharmacy Residency at Bayfront Health, St. Petersburg, FL
- At LRH since 2022
- Claudia loves good food, animals, painting, and pickleball



Pain Management

June Vasquez



- Alma Mater: University of Florida
- PGY1 Pharmacy & PGY2 Pain Management & Palliative Care Residencies at LRH
- At LRH since 2011
- June's favorite food is rice and says everyone should try kimchi at least once!

Pediatrics

Wendy Bailey

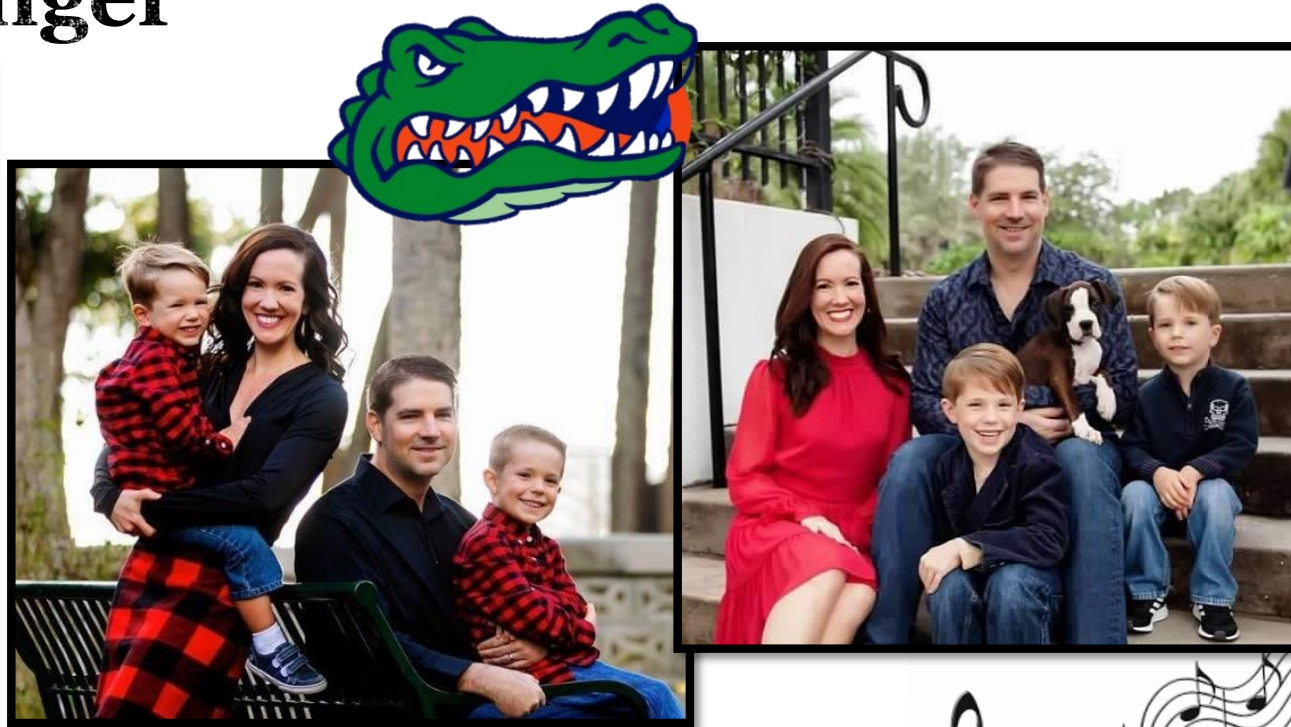


- Alma Mater: Mercer College of Pharmacy and Health Sciences
- At LRH since 2014
- Wendy appeared in olive oil ads for a local Plant City company!



Practice Management

Brian Anger



- Alma Mater: University of Florida
- PGY1 Pharmacy & PGY2 Critical Care Residencies at Medical University of South Carolina, Charleston, SC
- At LRH since 2015
- Brian began his college career as a music major



Practice Management & Staffing

Anthony Pazanese



- Alma Mater: Palm Beach Atlantic University
- Pain Management & Palliative Care Residency at LRH
- At LRH since 2010
- If Anthony were a medication he would be hydroxyzine because he's great at calming people down!



Psychiatry

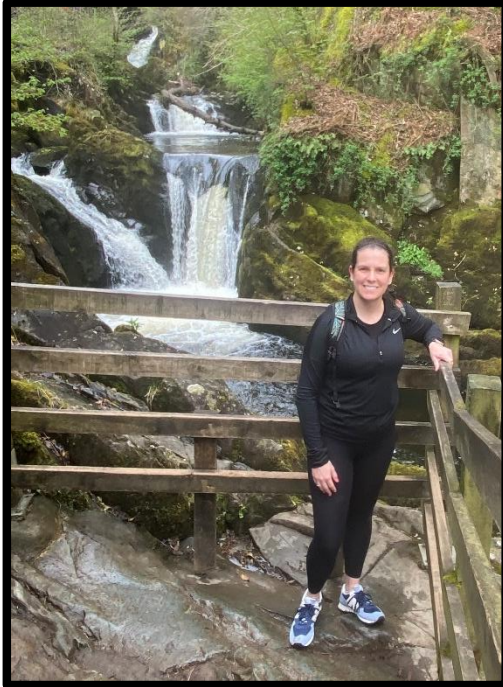
Melody Stevens



- Alma Mater: University of Florida
- PGY1 Pharmacy Residency at LRH
- At LRH since 2008
- Melody has participated in several mission trips to Malawi and Venezuela

Quality

Jennifer Montero



- Alma Mater: Nova Southeastern University
- PGY1 Pharmacy & PGY2 Critical Care Residencies at LRH
- At LRH since 2011
- Jenn has volunteered at the same camp every summer since she was 14 years old



Research Support

Georgia Keriazes



- Alma Mater: University of Florida
- At LRH since 1990
- Georgia enjoys growing muscadine grapes and making jam!



Transitions of Care

Lindsey Smith



- Alma Mater: Lake Erie College of Osteopathic Medicine
- PGY1 Pharmacy Ambulatory Care Residency at LRH
- At LRH since 2018
- Lindsey's guilty pleasure is watching ALL reality shows!



Transitions of Care

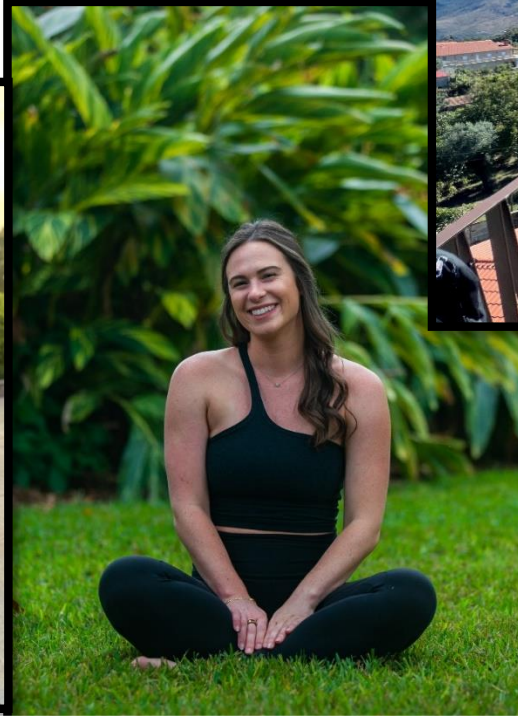
Namitha Vellian



- Alma Mater: Butler University
- PGY1 Pharmacy Ambulatory Care Residency at LRH
- At LRH since 2022
- Namitha loves to spend her time at the beach with friends & family

Trauma Step Down

Lauren Mullen



The cutest
ragdoll to ever
exist
OLIVER



- Alma Mater: University of Florida
- PGY1 Pharmacy Residency at University of Tennessee Medical Center, Knoxville, TN & PGY2 Critical Care Residency Holmes Regional Medical Center, Melbourne, FL
- At LRH since 2022
- Lauren teaches Pure Barre in her spare time

